

Index

JAWS® Screen Reading Software	Pages 2 & 3
PAC Mate Omni™ Accessible Pocket PC	Pages 4 & 5
Video Magnifiers	Pages 6 - 12
LED Illuminated Hand Magnifiers	Page 13
MAGic® Screen Magnification Software	Page 14
MAGic Large Print Keyboard	Page 15
Scanning and Reading Products	Pages 16 - 19
Braille Displays	Pages 20 & 21
WYNN™ Literacy Software	Page 22
TestTalker® Literacy Software	Page 23
Training	Page 24



JAWS® for Windows

Screen Reading Software

The world's most popular screen reader, distributed in more than 50 countries, and translated into 23 languages

Get started today working with all of your Microsoft applications. Everything you need is included to access and use Microsoft® Office Suite, MSN Messenger®, Corel® WordPerfect, Adobe® Acrobat Reader, Internet Explorer™, Firefox™ – and more.

- ▶ Access your applications and the Internet with synthesized speech
- ▶ Unmatched Braille support
- ▶ Talking installation
- ▶ Two multi-lingual speech synthesizers - Eloquence™ and RealSpeak™ Direct Solo with its human-like voices
- ▶ DAISY-formatted training in text and audio
- ▶ Supports Windows® XP, Windows Vista®, and Windows 7

More than 15 years experience working with Windows.
Available for both 32-bit and 64-bit Windows operating systems.

**FSReader™ DAISY player
software included**



Focus 40 Blue Bluetooth®
Braille display
Page 20



Learn about these related products



PAC Mate Omni accessible
Pocket PC with JAWS
Page 4



MAGic screen
magnification
software
Page 14



OpenBook
scanning and
reading software
Page 16

PAC Mate Omni

All the convenience and functions of a Pocket PC – accessible to the visually impaired

The portable and flexible PAC Mate Omni brings all the benefits of a mainstream PDA to blind and low vision users.

Word Mobile

Excel Mobile

PowerPoint Mobile

Internet Explorer

Outlook Mobile

• Calendar • Contacts

• Inbox • Tasks

And More

— Plus —

- ▶ Sync with your computer. Now your information and programs are fully portable.
- ▶ Compose reports with Freedom Scientific's powerful FSEdit word processor
- ▶ Record lectures and meetings with the built-in microphone
- ▶ Add a 20- or 40-cell portable Braille display - removable for use with your computer
- ▶ Use Freedom Scientific's GPS software, DAISY player, barcode reader, and many off-the-shelf Pocket PC applications
- ▶ Practice or brush up on Braille with FSBraille Coach

Two models: choose a Perkins-style Braille keyboard or a QWERTY keyboard.

**JAWS screen
reading software
built-in!**



PAC Mate Omni QX420
with QWERTY keyboard
and 20-cell Braille display

Easy to learn and use with onboard Help!



PAC Mate Omni BX400 with Perkins-style keyboard

Learn about these related products



JAWS for Windows screen reading software
Page 2

PAC Mate Portable Braille Displays
Page 20



The SARA CE - Camera Edition - Scanning And Reading Appliance
Page 19



TOPAZ Desktop Video Magnifier

*Our most versatile desktop
video magnifiers yet*

Just flip the switch to turn on the TOPAZ, and three dials are all you need for your basic video magnification functions – increase and decrease magnification, step through the available color modes, and adjust. All the controls are right under the display – handy when you want them and never in the way of your reading material or your work.

Features:

- ▶ Clear, vivid image
- ▶ Ergonomic design with easy-to-use controls
- ▶ Directed LED lighting for a bright work surface without glare
- ▶ Extra large reading table
- ▶ 8.25 inches of workspace under the camera
- ▶ Freeze Frame
- ▶ Focus Lock
- ▶ 30 customizable high contrast text color modes
- ▶ True color and optional enhanced full color
- ▶ Widest magnification range
- ▶ Built-in holder to keep cans and bottles from rolling off the table
- ▶ Screen swivels in all directions for most comfortable viewing



**Widescreen 20-inch, 22-inch, and 24-inch models
Plus Camera-only and 17-inch LCD models**

Magnification

- 17" monitor: 1.9x to 49x
- 20" monitor: 2.4x to 64x
- 22" monitor: 2.6x to 68x
- 24" monitor: 2.9x to 77x

TOPAZ[®] XL

Computer Compatible Desktop Video Magnifier

These TOPAZ XL models have all the great ease-of-use features of our TOPAZ video magnifiers plus two ways to connect to your computer.



Connect the TOPAZ XL to your computer with USB and use Freedom Scientific's optional GEM™ software to work with your PC and document simultaneously. Split your computer screen vertically to enter a column of numbers in a spreadsheet or horizontally to type notes from your document in a word processor. Even save images from your TOPAZ XL.

Connect your computer's monitor cable to the TOPAZ XL's VGA port and view your documents as well as your PC on your TOPAZ XL screen. Toggle between with a button push. Save space on your desk and avoid moving your chair back and forth. Do you need to block out all but the line you are reading to reduce eye fatigue, or set reference lines as you move a document back and forth under the camera? The TOPAZ XL has these features built-in. Choose horizontal or vertical markers, move them anywhere on the screen, and adjust the space between them.

Available in camera only, 17-inch LCD, 20-inch, 22-inch, and 24-inch widescreen.

Features:

- ▶ 30 customizable high contrast text color modes
- ▶ True color and optional enhanced full color
- ▶ Widest magnification range
- ▶ Find feature to quickly zoom out, find your place, and zoom back in for reading
- ▶ Focus lock and position locator beam for writing
- ▶ Freeze Frame
- ▶ Extra large reading table for magazines, photo albums, and hobbies



The ONYX Deskset XL 22"
widescreen with
optional XY Reading Table



ONYX Deskset XL

All-inclusive portable magnification solution

For students, professionals, and others with vision loss, the ONYX Deskset XL is the magnification solution that goes where you go in one easy-to-carry, self-contained package. Carry it about with a top-mounted carrying handle or in its wheeled case, and plug it into any standard wall plug; it's ready to deliver crisp, clear magnification for reading documents or seeing details across the largest lecture hall. The 17 3/4-inches of space between the camera and table give you ample room for working on projects - even knitting and hand sewing.

The ONYX Deskset XL features a camera mounted on a rotating arm to a flat

panel monitor. The camera's mounting arm has three axes, and the camera itself rotates up to 350 degrees. Place it in almost endless positions.

- ▶ Full color mode, enhanced black on white, Enhanced white on black, yellow on blue, and yellow on black
- ▶ Distance view, document view, and self-view
- ▶ Brightness adjustments to eliminate glare and enable viewing in low light
- ▶ Masks and Reading Lines
- ▶ Find feature
- ▶ Freeze Frame
- ▶ Focus Lock
- ▶ Compact, lightweight design - a mere 12-18 lbs., varied by model
- ▶ Raise, lower, and tilt monitor for most comfortable use



ONYX[®] Swing-arm and ONYX[®] Flexible-arm Adjustable-view magnification



The ONYX Swing-arm in distance view

ONYX Swing-arm and Flexible-arm video magnifiers can be configured in any number of adjustable positions to accommodate almost any viewing angle. They are especially well suited for working with three-dimensional objects. The powerful camera is uniquely mounted on either a swinging arm or articulating arm to provide you with three distinct views: distance, document, and self view with a true mirror image. Easily connects to any NTSC TV for an affordable video magnification solution.

Use the Find feature to aim at a distant object before zooming in. Auto Focus eliminates the need for constant refocusing as the viewing field changes.

Features:

- ▶ Full color mode, inverse color, enhanced black on white positive, enhanced white on black negative
- ▶ Omni-directional articulating arm
- ▶ Brightness adjustments to eliminate glare
- ▶ Masks and Reading Lines
- ▶ Find feature
- ▶ Focus Lock
- ▶ Freeze Frame
- ▶ Position Sensor memorizes your settings in each viewing mode
- ▶ Detachable camera
- ▶ Universal 110-240 volt power supply
- ▶ Magnification up to 100x, based on a 20-inch NTSC TV screen



Add a reading table to your ONYX. The large table moves in a smooth gliding motion, so the camera can remain stationary while you read, write, and magnify other tasks.



ONYX® Swing-arm PC Edition and **ONYX® Flexible-arm PC Edition**

**Powerful vision management for your
PC at home, school, or the office**

Turn your PC into a vision and image management tool that enables you to work with magnified camera images and a magnified PC view at the same time. The ONYX Flexible-arm PC Edition and ONYX Swing-arm PC Edition produce clear magnified images in three distinct modes: distance, document, and self view.

The powerful ONYX camera can be adjusted to a wide array of positions that accommodate any viewing situation. The camera for either model produces magnification up to 85x on a 17-inch PC screen.

- Features:**
- Find feature
 - Focus Lock
 - Freeze Frame
 - RF remote control
 - Compact design sets up and disassembles quickly for easy portability
 - Camera can be powered from a PC via two USB ports

Comes with *MAGic® with Speech* and *MAGic EyeMerge™* features:

- Switch easily between magnified PC view and camera view
- Create multiple split screen views
- Change text and background colors
- Capture images
- Flip between multiple snapshots
- Adjust contrast levels



RUBY®

Handheld Video Magnifier

Taking compact magnification to a new level and beyond

Flip out the convenient handle, and use the RUBY like a conventional magnifying glass – but see everything with enhanced contrast and NO DISTORTION. Fold the handle under, and place it flat on a menu or other small print.

Features:

- ▶ Magnifies from 2x to 14x
- ▶ High resolution 4.3-inch LCD display
- ▶ Use Freeze Frame to temporarily capture a magnified image for closer inspection
- ▶ 2 hours continuous use
- ▶ Uses rechargeable or disposable batteries
- ▶ Ships with carrying case and battery charger



Freeze Frame captures and magnifies hard-to-read text or numerals, like serial numbers or prices on store shelves.

Contrast Modes

Full color mode and four enhanced contrast modes for reading:

- Ⓣ Black text on a white background
- Ⓣ White text on a black background
- Ⓣ Yellow text on a blue background
- Ⓣ Yellow text on a black background



The RUBY handle folded flat





SAPPHIRE® **Handheld Video Magnifier**

The best magnification for on-the-go convenience

Take the SAPPHIRE everywhere you go for the ultimate in quality and versatility in a handheld video magnifier.

The SAPPHIRE sits flat for reading maps, magazines, receipts, bus schedules, and menus. The display adjusts for the most comfortable position.

The Freeze Frame feature lets you capture images on high shelves and bring them close for reading.

Elevate the SAPPHIRE with its built-in writing stand, and you have space to write or work under the camera with a small tool.

Use the included cable to connect the SAPPHIRE to your TV for even higher magnification.

The sliding control makes it easy to adjust and readjust the magnification to the exact level you need for any situation. Easily go from reading larger type in headings to fine print and back again, with no distortion.

Features:

- Magnifies from 3.4x to 16x
- The seven-inch LCD screen reduces glare
- Full color display plus any of 23 text and background color combinations
- No computer knowledge necessary
- Runs on rechargeable batteries for four hours

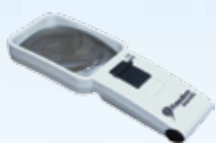


Choose the SAPPHIRE
in slate, blue, or red

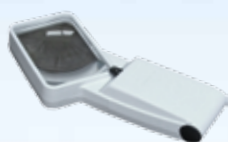
LED Illuminated Magnifying Glasses

These magnifying glasses combine precision German optics with bright LED lighting. The 10,000-hour LEDs illuminate the entire field of view, and the meticulously crafted aspheric lenses provide powerful magnification with less distortion - great for those with limited vision due to macular degeneration, glaucoma, or cataracts.

A range of handheld magnifying glasses with straight heads and angled heads is available, from 3.5X/10D to 10.75X/39D. Powered by three included AAA batteries.



3x/8D



3.5X/10D



4x/12D



5x/16D



6x/20D



7x/24D



8x/28D



10.75x/39D

A variety of stand magnifying glasses are available from 3X/8D to 8X/28D. Powered by three included AA batteries.



3X/8D



4X/12D



5X/16D



6X/20D



7X/24D



8X/28D

MAGic -
magnification for
your computer
Page 14



MAGic[®]

Screen Magnification Software

Magnification with speech for your computer content

MAGic screen magnification software allows low vision computer users to magnify text and other elements on the computer screen and to make color and other adjustments to suit their personal vision needs.

- ▶ Magnify your computer screen up to 36 times
- ▶ Reduce eye fatigue by letting MAGic's speech read aloud important screen information and long documents
- ▶ Customize MAGic's speech to suit your preferences
- ▶ Eliminate glare and boost contrast
- ▶ Keep track of your location with a variety of mouse and cursor enhancements
- ▶ Available for both 32-bit and 64-bit Windows operating systems
- ▶ MAGic uses many of the same reading commands as JAWS, making it easier to learn to use either product

**Easy-to-learn
basic training
in DAISY text
and audio**

**FSReader™ DAISY player
software included**

MAGic Pro Scripting Edition

Customize MAGic for applications through scripting - just like you do with JAWS. By using scripts, you are able to modify MAGic's behavior in any application, increasing flexibility and enhancing productivity.



MAGic[®] Large Print Keyboard

The MAGic Large Print Keyboard provides low vision users an easy to-read keyboard with 22 dedicated keys that make learning and using MAGic screen magnification software easier than ever.

Bold, high contrast keys with oversized characters provide fast, accurate typing with less of the eye fatigue experienced when straining to locate keys on standard keyboards.



The most frequently used functions of MAGic screen magnification software are preassigned to single keys for quick access to these features. Press a single key to launch MAGic. Quickly zoom out to 1x to check your formatting, and then return to your working magnification level. Toggle on and off visual enhancements for mouse, cursor, and focus tracking. Adjust reading speed on the fly. Control all of these features and more with the 22 specialized keys.

The Toggle Monitor and View Locking keys improve productivity for MAGic users who work with different applications in two independent monitors.

Some MAGic keyboard keys already are assigned in JAWS to features such as adjusting speech rate and bringing up the Links List and the Research It tool. Other keys can be assigned to JAWS functions through the JAWS Keyboard Manager.



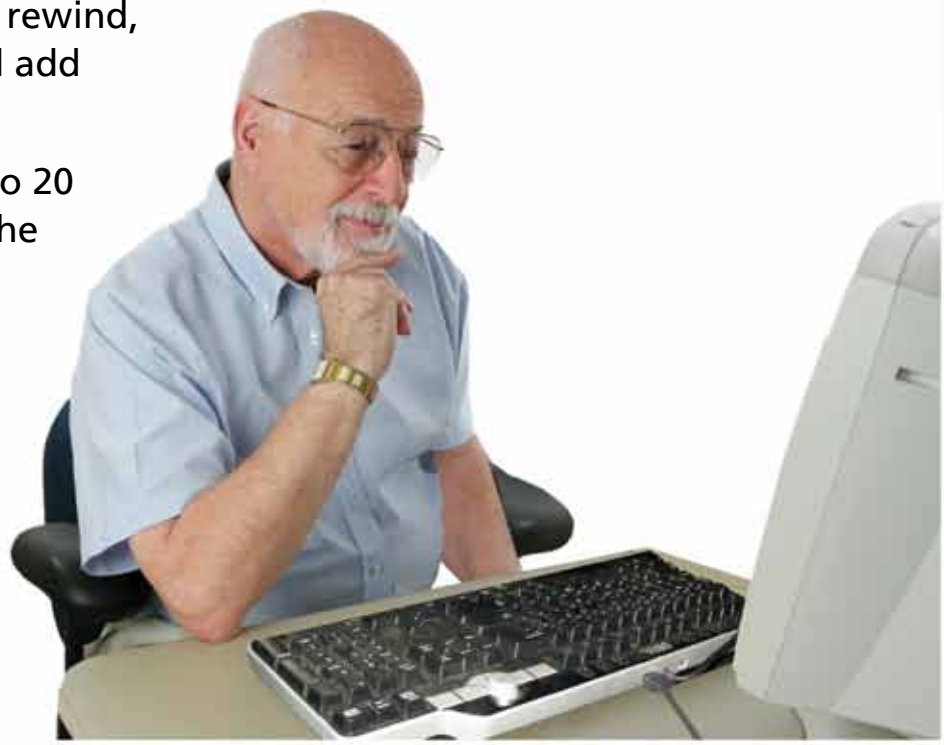
OpenBook®

Scanning and Reading Software

OpenBook converts printed or graphic-based text to electronic text and reads it aloud with quality speech and the latest optical character recognition (OCR) technology. OpenBook utilizes both the Nuance OmniPage® and ABBYY FineReader® OCR engines to bring you the most accurate text recognition available. Choose between two leading text-to-speech software synthesizers: RealSpeak™ Solo (natural, human-sounding voices) or Eloquence (efficient synthesized speech that often is preferred for editing and document skimming). OpenBook also provides on-screen text, so low vision users can read along.

Features:

- ▶ Adjust text font and size, character spacing, and colors to provide high contrast, easy-to-read text
- ▶ Text masking and spotlighting are synchronized with the speech to help the reader follow along
- ▶ Split screen, comments, and many more new features
- ▶ Skim read, fast forward, rewind, bookmark passages, and add highlighting
- ▶ OpenBook captures up to 20 pages per minute with the PEARL camera



PEARL[®]

Portable Reading Camera

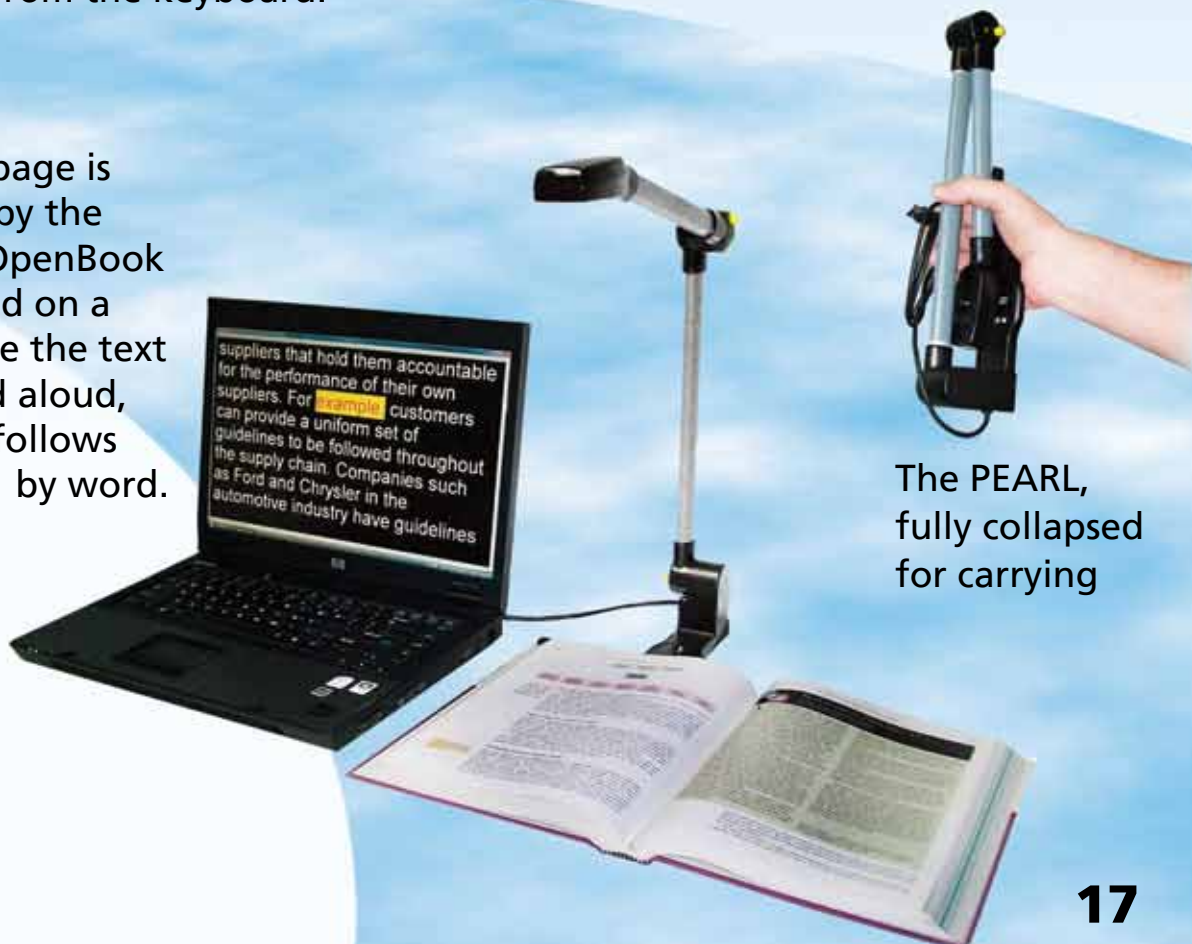
Capturing text images is faster than ever before with the PEARL and the latest release of Freedom Scientific's popular OpenBook[®] software. The camera deploys in seconds to connect to a PC. Simply press a keystroke to snap a picture and hear your documents read back with synthesized speech while you control the reading rate and voice. OpenBook lets you select from the Eloquence synthesizer or one of the human-sounding voices from RealSpeak Solo Direct[®].

Tailor the appearance of text on your screen (font style, size, character spacing, and color), view with split-screen, and compare your original document and OCR conversion results, use Masking and Word Spotlighting to help you follow text as it is read, and more.

In automatic mode, the PEARL senses motion, so it knows to snap an image whenever you turn a page. Place your paperback novel sideways, and the PEARL will snap two pages at a time and maintain the pagination. For larger books, you can capture even pages first. Flip the book over to capture the odd pages. You can keep turning pages and capturing images while OpenBook reads.

Use the PEARL to show a live video image on your PC to fill out short forms, or snap a picture to show the enlarged image on your PC, and navigate with the virtual XY table from the keyboard.

A textbook page is reformatted by the PEARL and OpenBook and displayed on a laptop. While the text is being read aloud, spotlighting follows along, word by word.



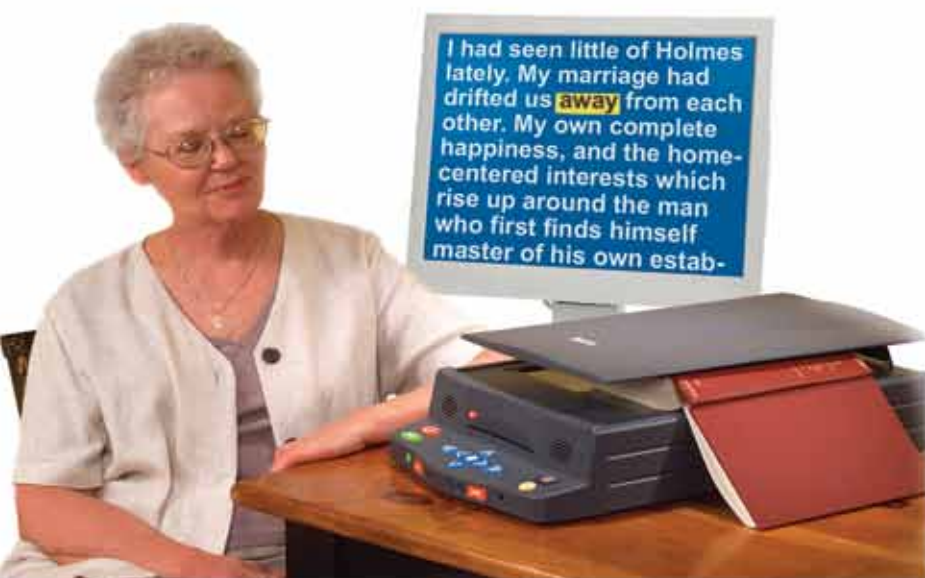
The PEARL, fully collapsed for carrying

The SARA™

Scanning And Reading Appliance

Simple, affordable, and versatile: the SARA scanning and reading appliance reads aloud your books, magazines, contracts, bills, mail, and other printed matter. With push-button controls, scan text and have it read back in your choice of human-like voices. Low vision users can even connect the SARA to a monitor, and read along with large type.

- ▶ Use the SARA right out of the box - no technical knowledge required
- ▶ You control the voice speed and volume and how the SARA reads to you – word by word or line by line – even spelling out words
- ▶ Built-in Braille support - connect a Focus or PAC Mate Portable Braille Display to the USB port and read your scanned document in contracted or uncontracted Braille
- ▶ Read documents in any of 16 languages with pleasant human-like voices
- ▶ Plays most audio formats, including DAISY-formatted books
- ▶ Save scanned documents to the hard drive, a USB thumb drive, or use the read/write CD drive



Attach the SARA to a computer monitor for colorful, large print access to complement speech. Change the type style, color, and spacing to fit your vision needs. 34 separate color combinations are available.

Listen to the SARA voices at www.SARA-SCANNER.COM

The SARA™ CE

Scanning And Reading Appliance - Camera Edition

Freedom Scientific's SARA CE is the next-generation self-contained scanning and reading appliance for the blind and those with low vision. Just place a printed page under the camera, and the SARA CE instantly starts reading it to you with RealSpeak human-sounding speech. No computer experience is needed. You don't even need to push a button to read almost any printed material – books, magazines, mail, and more. The camera automatically senses when a new page is presented.

Connect a monitor to access the customizable low vision features. Increase the text size. Change text and background colors. Add more space between letters, and spotlight words as they are spoken.

- ▶ Lightning fast optical character recognition (OCR)
- ▶ Built-in keypad with brightly-colored tactile keys provides access to a wealth of additional features: pause reading, move forward and backward, or hear a word spelled out. Change the reading speed and volume. Select a different voice. Scan and read in one of 16 languages.
- ▶ Change the scanning mode to capture bound books, and save them on the 160GB hard drive or a USB thumb drive
- ▶ Place your paperback novel sideways, and the SARA CE will read two pages at a time
- ▶ Connect a Freedom Scientific Braille display for instant transcription in contracted or uncontracted Braille
- ▶ Independent keyboard Help for document reading, menus, and playing audio books
- ▶ 222 classic novels come pre-installed
- ▶ Plays most audio formats, including DAISY-formatted books – onboard DAISY-formatted user manual



The Focus 40 Blue Braille display with Bluetooth®



Focus and PAC Mate™ Portable Braille Displays

The world's best Braille displays at affordable prices

Focus and PAC Mate Portable Braille Displays are designed around Braille users' most wanted features – and that makes them a hands-down favorite.

Used with JAWS® screen reading software, our Braille displays' refreshable Braille cells act as a tactile monitor, allowing users to navigate and read information in dynamic Braille.

- ▶ Move smoothly around the display with our exclusive WHIZWHEELS® and programmable hot keys
- ▶ Reduce arm movement with our ergonomic design
- ▶ Enjoy reading with our seamless Braille cells that feel like paper
- ▶ Easily configure advanced features and options through JAWS®
- ▶ Simple connection: Just plug into a PC or notebook computer via USB



The Focus 40 Blue Braille display with Bluetooth® wireless connectivity. The Focus 40 Blue is the latest way to get the most out of a 40-cell Braille display. It connects via USB 2.0 or wirelessly with Bluetooth® 2.0, with 20 hours of battery life. It's a space saver, too at a mere 12.5" x 3.8" x 1" and only 1.87 lbs. Carry case and battery charger with international adapters included.

Choose the Braille display that's best for you

- ▶ *The 40-cell Focus 40*
- ▶ *The 80-cell Focus 80*
- ▶ *The Focus 40 Blue wireless*
- ▶ *The 20-cell PAC Mate Portable Braille Display*
- ▶ *The 40-cell PAC Mate Portable Braille Display*



PAC Mate 20 Portable Braille Display



Focus 40 Braille Display



PAC Mate Omni QX400 with detached PAC Mate 40-cell PAC Mate Portable Braille Display



PAC Mate Omni BX420 (PAC Mate BX with attached 20-cell PAC Mate Portable Braille Display)

Focus 80 Braille Display



WYNN
highlighting
a Web page



WYNN™ **Literacy Software**

WYNN scans printed pages and converts them to electronic text and into an auditory and visual presentation with tools that make information easier to comprehend.

- ▶ Functions include text-to-speech, a built-in Web browser, dictionaries, highlighters, spelling and homophone checker
- ▶ The talking Web browser permits students to highlight content live on the Web and extract it into a separate document for easier review

WYNN comes in two versions: WYNN Wizard (includes OCR and scanning) and WYNN Reader (without OCR and scanning). Network versions are available.



WYNN toolbar

Lightning Fast OCR with PEARL

Now add the PEARL portable reading camera to WYNN. With just one keystroke, it snaps a picture and reads to you within seconds. Weighing only two pounds, PEARL provides excellent OCR access wherever you are reading.



TestTalker®

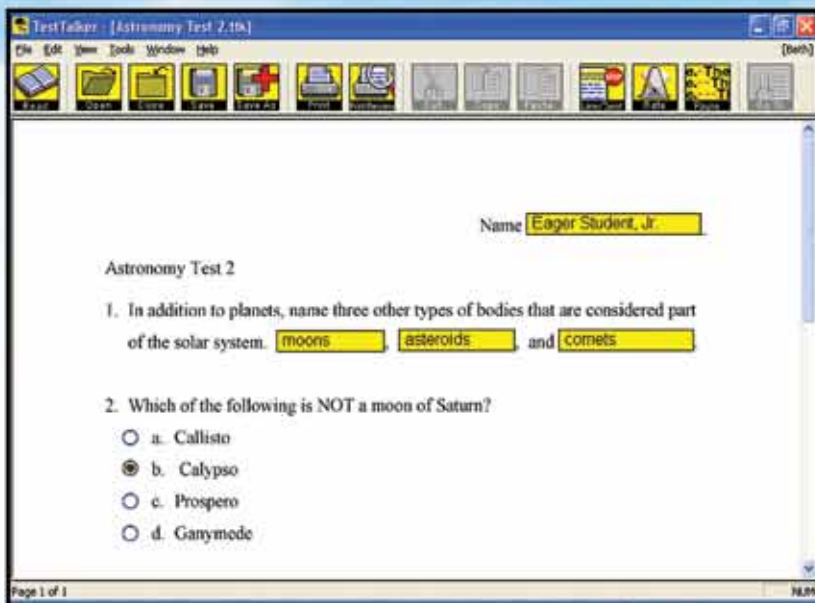
Test-taking Software

Assistance for students with learning disabilities

TestTalker software helps students who require additional support to succeed with written tests and worksheets. TestTalker converts these and other forms into talking documents.

- ▶ Teachers design instructional materials in the standard way, then use TestTalker to convert them to speech
- ▶ Students take tests on a computer using the TestTalker Student Edition
- ▶ Students can hear the questions and work at their own pace, without embarrassment or fear of having to ask the teacher to repeat a question

TestTalker comes in Teacher and Student editions and in quantity student packs.



TestTalker toolbar



Product Training Courses & Tutorials

- ▶ Supporting and Teaching Windows® with JAWS and MAGic
- ▶ Software Solutions – MAGic, OpenBook, and JAWS
- ▶ Basics of Script Writing with JAWS and MAGic
- ▶ Script Development with JAWS and MAGic
- ▶ Web Page Testing with JAWS
- ▶ Office 2007 and 2010 with JAWS and MAGic

Onsite Training

Freedom Scientific offers training courses at your location. Please contact Freedom Scientific for details and prices:

Training Department

1- 800-444-4443 or 727-803-8000, extension 1016 or 4001

Training at the St. Petersburg, Florida Center

Check the Freedom Scientific Web site for the current schedule:

<http://www.FreedomScientific.com/Training>

e-Learning Through Free and Fee-based Webinars

Learn to use JAWS screen reading software, MAGic screen magnification software, and more from the convenience of your home or office. No travel expenses, and archived lessons are available, in case you miss a Webinar. For a schedule of fee-based and free training Webinars visit the online learning center: <http://www.FreedomScientific.com/elearn>